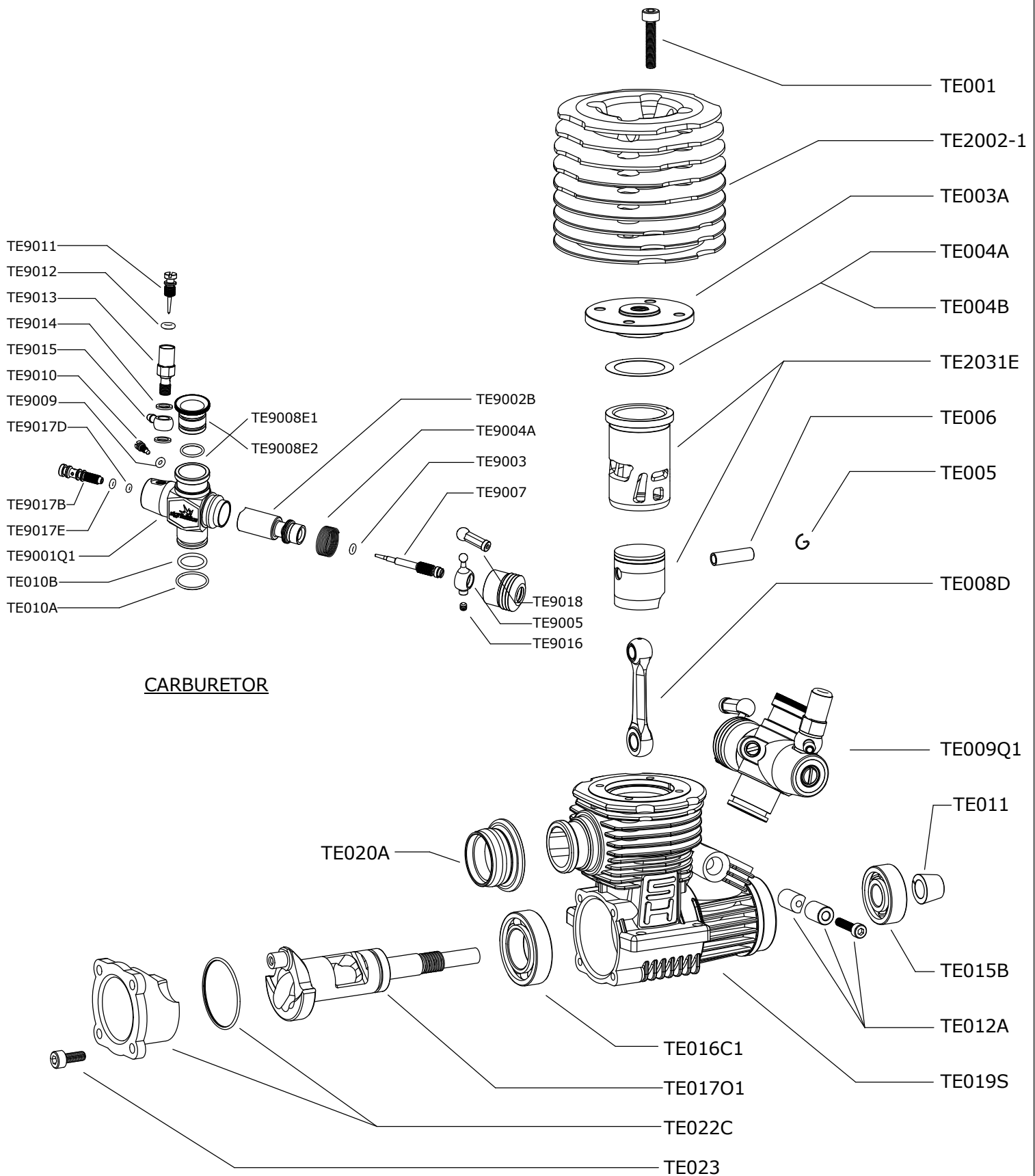


PT21XT2-P8 21 Pro Competition Exhaust On Road Engine

(Three Needle Carb.)



CARBURETOR

TECHNICAL DATA:

Type:	Cubic capacity:	Bore:	Stroke:	R.P.M:	Power:	Weight:
PT21XT2-P8	3.497 cc	16.27mm	16.75mm	36000	HP 2.70	350 g